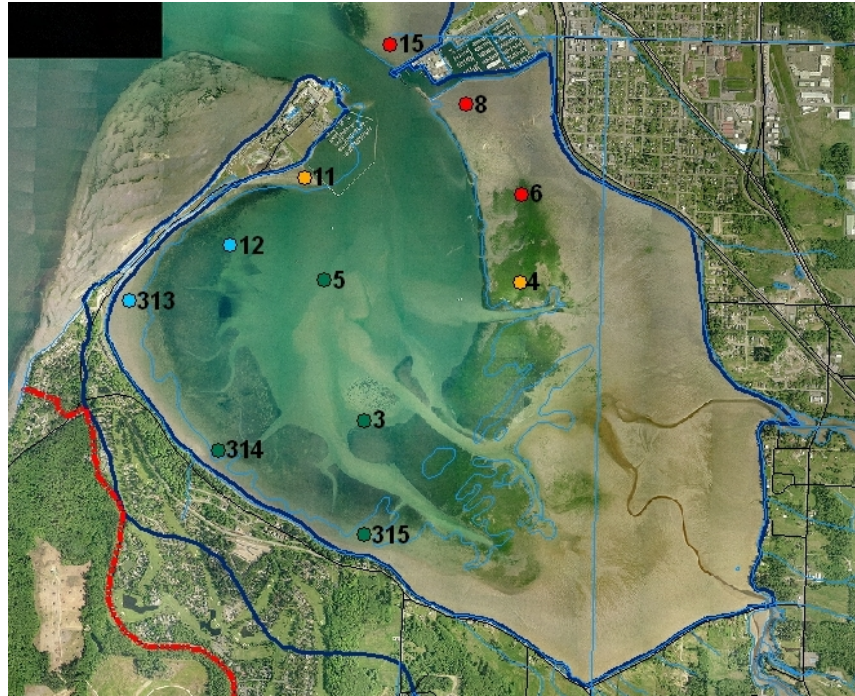


## Drayton Harbor Marine Stations Water Quality Status January 2011



Station	All Ambient Data 4/08-01/11				Seasonal Closure (Nov-Feb) 09/06-10/10			
	90 <sup>th</sup> %*	GM*	N**	Status***	90 <sup>th</sup> %*	GM*	N**	Status***
3	27.7	5.3	32	●	9.9	3.4	31	●
4	30.7	5.0	32	●	11.5	4.0	31	●
5	26.0	4.6	31	●	5.8	2.5	31	●
6	44.8	6.7	30	●	13.8	3.9	30	●
8	126.2	13.9	32	●	137.5	16.4	31	●
11	34.0	5.2	32	●	7.3	2.8	31	●
12	19.7	4.0	32	●	4.7	2.5	31	●
15	107.1	13.1	32	●	78.6	11.4	31	●
313	19.7	3.5	32	●	3.0	2.0	31	●
314	22.8	4.4	32	●	7.7	2.9	31	●
315	24.8	4.9	32	●	8.1	3.0	31	●

\* The geometric mean and 90<sup>th</sup> percentile values in this table are approximations for illustration of water quality status at each sampling station. The Washington State Department of Health calculations provide the official values that are used for shellfish growing area classifications.

\*\* N= the number of samples. The shellfish standards require a minimum of 30 samples.

\*\*\* Red dot indicates prohibited (>43 FC/100mL), orange indicates threatened (30-43 FC/100mL), green indicates of concern (20-30 FC/100mL), and blue indicates well within standards (<20 FC/100mL)

### National Shellfish Sanitation Standards for Marine Waters:

- Geometric mean <14 fecal coliform/100mL, and
- Estimated 90<sup>th</sup> percentile <43 fecal coliform/100mL

### Conditional Approval for Portions of Drayton Harbor:

- Shellfish Growing Areas Closed Seasonally Between November and February